

THE HOLLY - Floorplan B

4 BEDROOMS | 4 BATHS
3,280 SQ. FT.

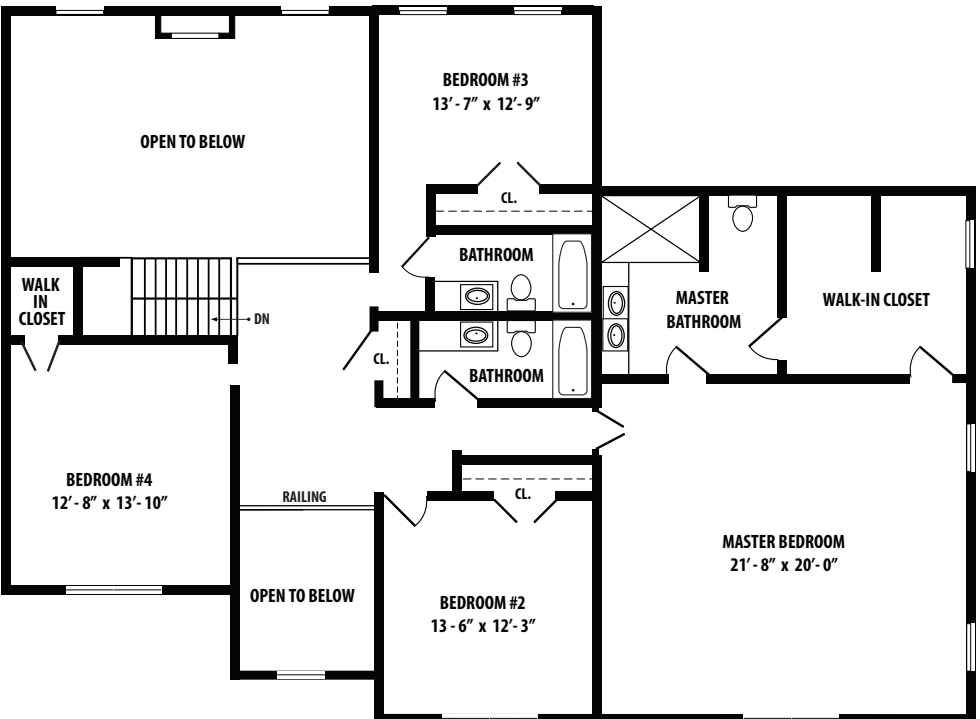
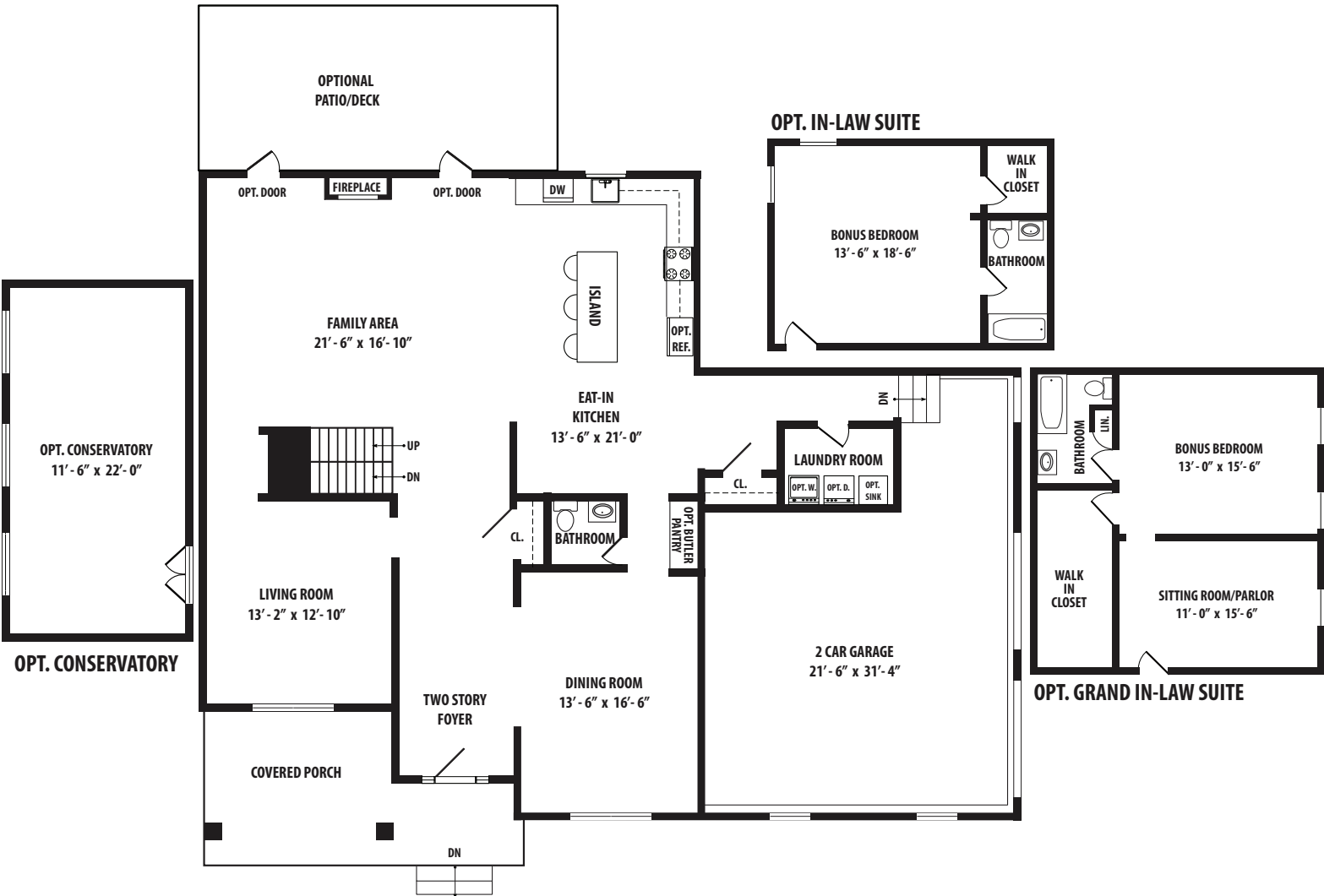


Apple Ridge Estates
AT NORTH HOWELL

The Holly B Floorplan

1st Floor	1,580 sq. ft.
2nd Floor	1,706 sq. ft.
TOTAL	3,280 sq. ft.

Opt. Conservatory	250 sq. ft.
Opt. In-law Suite	249 sq. ft.
Opt. Grand In-law Suite	506 sq. ft.



FIRST FLOOR

SECOND FLOOR

Artist's rendering may not be accurate in every detail.
Floor plans are approximate. All dimensions may vary and are subject to field variations.

